



STRATEGIC PLAN

2018-2021

Priority 1: **Prevention**

Priority 2: **System Integration**

Priority 3: **Family Violence**

Priority 4: **Strategic Engagement & Partnerships**



Supporting implementation
of the East Gippsland
Well Placed for Wellbeing Plan

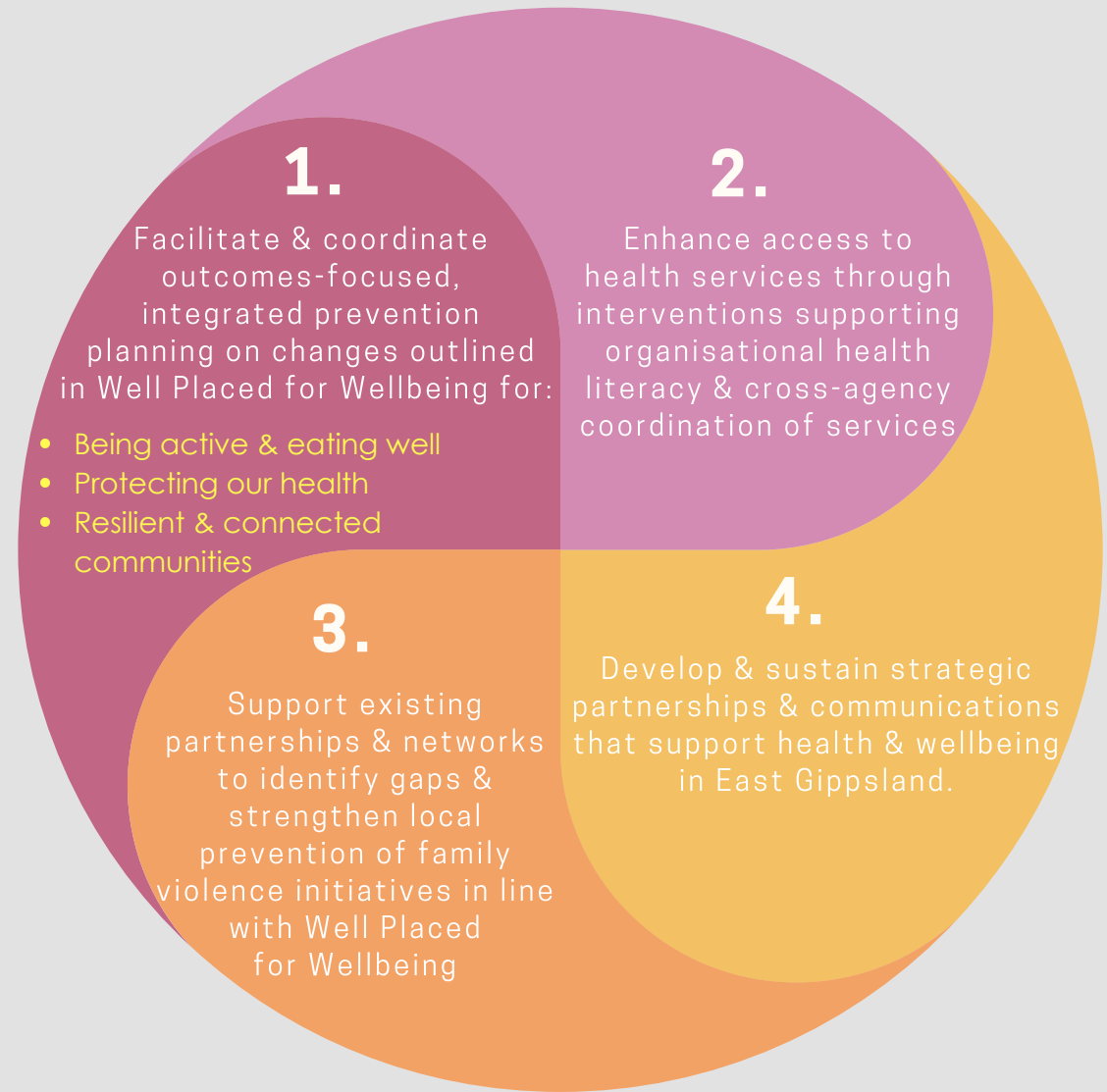
www.egpcp.org

Underlying Principles

Systems Thinking

Outcomes Thinking

Shared Local Measures



Our Values

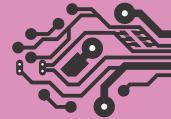
Trust Respect Quality Equality Collaboration Integration Access

HOW WE WILL ACHIEVE THIS



1. Prevention

- Lead place based primary prevention action with a focus on outcomes and system thinking.
- Facilitate and support integrated planning and reporting of the Healthy Eating and Active Living partnership.
- Facilitate the East Gippsland Drug and Alcohol Prevention Alliance, supporting actions to prevent first use of drugs and alcohol.
- Coordinate implementation of Communities That Care interventions in East Gippsland.
- Establish an East Gippsland mental wellbeing network.
- Facilitate local implementation of the Gippsland PCP sugary drinks / obesity project.



2. System Integration

- Work with member organisations to embed health literacy principles into practice.
- Support and facilitate the East Gippsland Aboriginal Eye Health Partnership to close the gap in Aboriginal eye health.
- Support the Gippsland PCP to implement the Healthcare that Counts framework, improving care for vulnerable children.
- Improve access and support for East Gippsland families through participation in the Service Access Working Group and promotion of service access guidelines.
- Support Gippsland PCP representation on the regional Health Pathways Steering Committee.



3. Family Violence

- Support the East Gippsland Children's Wellbeing Collective and East Gippsland Partners in Prevention of Violence Working Groups through shared planning and measurement of activities.
- Facilitate active bystander sessions for the prevention of violence against women in the community.
- Actively participate in the Gippsland Prevention of Men's Violence Against Women Steering Committee.



4. Strategic Engagement & Partnerships

- Attract and retain appropriate partners to ensure sustainability of partnerships and alliances.
- Develop a communication strategy to increase the visibility of EGPCP and its member agency achievements.
- Increase community and cultural engagement in EGPCP activity.
- Increase partner capacity to deliver on action through partnership forums.